

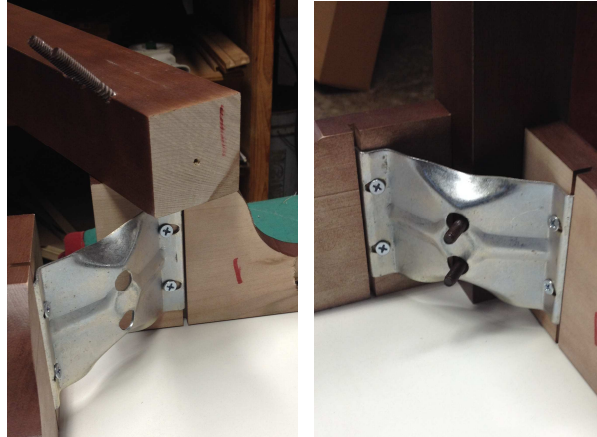
ASSEMBLY OF APRON TABLE



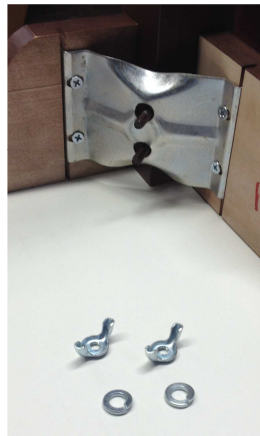
TOOLS REQUIRED:

NONE

- a) **MATCHING LEG 1 TO CORNER 1 PLACE BOLTS THROUGH CORNER BRACKET**
(all four legs & corners are numbered)



- b) **USING HARDWARE PROVIDED (Qty 8: 5/16 Lock Washers & Qty 8: 5/16 - 18 Wing Nuts)...**



- c) **...ATTACH LEGS TO CORNER BRACKETS**

