

ASSEMBLY OF SEAMED TABLE TOP



TOOLS REQUIRED:

UTILITY KNIFE
#2 PHILLIPS HEAD SCREWDRIVER
CENTER PUNCH

- a) INVERT TOP HALVES ONTO SOLID CLEAN WORK SURFACE
- b) LOCATE TIGHT JOINT FASTENERS & JOINING BISCUITS



- c) CUT OUT FOIL COVERING HOLE IN JOINING END OF TOPS
(requires utility knife)



- d) CUT OUT FOIL COVERING ELONGATED SLOT ON JOINING
END OF TOPS
(requires utility knife)



- e) INSERT JOINING BISCUITS INTO ELONGATED SLOTS OF ONE TOP HALF



- f) INSERT CAP NUT WITH TIGHTENING BALL INTO HOLES OF ONE TOP HALF



- g) THREAD JOINING BOLT INTO CAP NUTS OF ONE TOP HALF



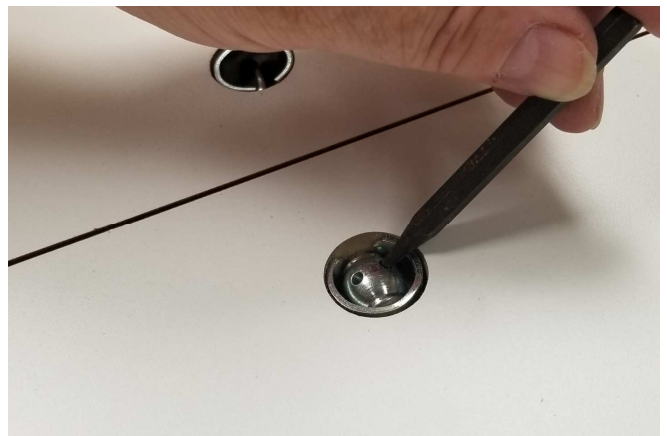
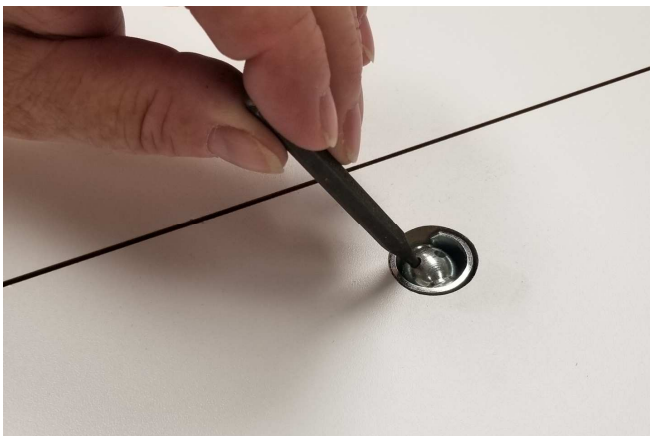
h) ALIGN AND SLIDE TOP HALVES TOGETHER



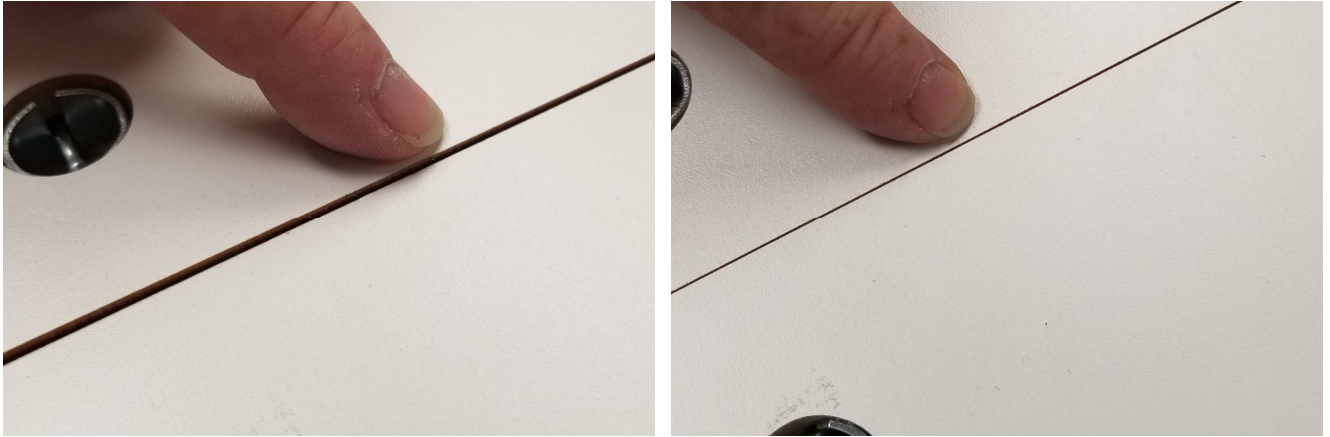
i) INSERT OPEN CAP NUT OVER FLAT END OF JOINING BOLT



j) TIGHTEN JOINT FASTENERS BY TURNING TIGHTENING BALL
(requires center punch)



- k) KEEP TOP LEVELLED WHILE TIGHTENING SO SEAM IS FLAT & ALIGNED WHEN TIGHT



- k) CENTER & ALIGN SEAM STIFFENING BATTEN



- l) USING SCREWS PROVIDED FASTEN SEAM STIFFENING BATTEN TO BOTTOM OF TOP
(requires #2 phillips head screwdriver)

